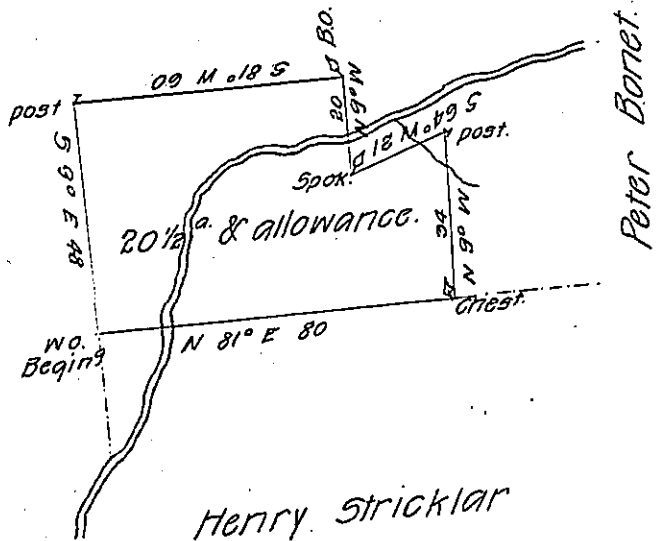


Proprietaries Tract settled by

WIDOW MEASE



Peter Barret

Surveyd to Lodwick Smith on the 7th March 1765. The above
 discribed Tract of Twinty acres & a half & allowance being
 a part of the Proprietarie-tract in Hempfield Townsh. Lancaster
 County.

Bartrem Galbraith D.S.

I have examined the above draught
 & find it correct.

I have serched & find y^e allowance of
 six P. Cent allowed on all the lands sold
 by y^e proprietaries agent parts of Conestogoe
 Manor, & other their appropriated Tracts, & in
 Particular Philip Schreyders part of hempfield tract March 23^d 1765.

To John Lukens Esq^r

Jno. Lukens

Surver Gen^l

IN TESTIMONY that the above is a copy of the original remaining on file in
 the Department of Internal Affairs of Pennsylvania, made
 conformably to an Act of Assembly approved the 16th day of
 February, 1833, I have hereunto set my Hand and caused
 the Seal of said Department to be affixed at Harrisburg,
 this 7th day of November 1906.

Isaac B. Brown
 Secretary of Internal Affairs.